

†

Membership and/or Baptism

Are you interested in becoming a Member? Are you interested in being Baptized? Please speak to our Pastor Steve de Vos or one of our Elders—Russ Armstead, Tony DaVee, Christopher French, Carl Jensen, Arturo Aray or contact the office at 858.278.2633.

Grief Support Group
on the second & fourth Friday
of every month at
11:00 a.m. in the Library.

If you are interested in attending,
please talk to Pastor Steve
or Joanna de Vos



**SERRA MESA
FOOD PANTRY**

Wednesday's

10:00 a.m. - 2:00 p.m.

Food, cash donations,
volunteers, and drivers needed.

†

Thank you!



**Kearny Mesa
Nursing Center Visit**
Sunday, October 6
at 3:00 p.m.

Come join us for worship, singing and
prayer with the residents at Kearny Mesa
Nursing Center. For more information or a
ride please talk to Tony DaVee.

Men's Conference!

October 4-6, 2019

See John Nowak

to register



New Members Class
October 13 & 20

If you are interested please talk to
Pastor Steve or Russ Armstead

**We Need
CANDY Donations**
for the



Harvest Festival
there will be barrels out for the
donations next week.
Thursday, October 31

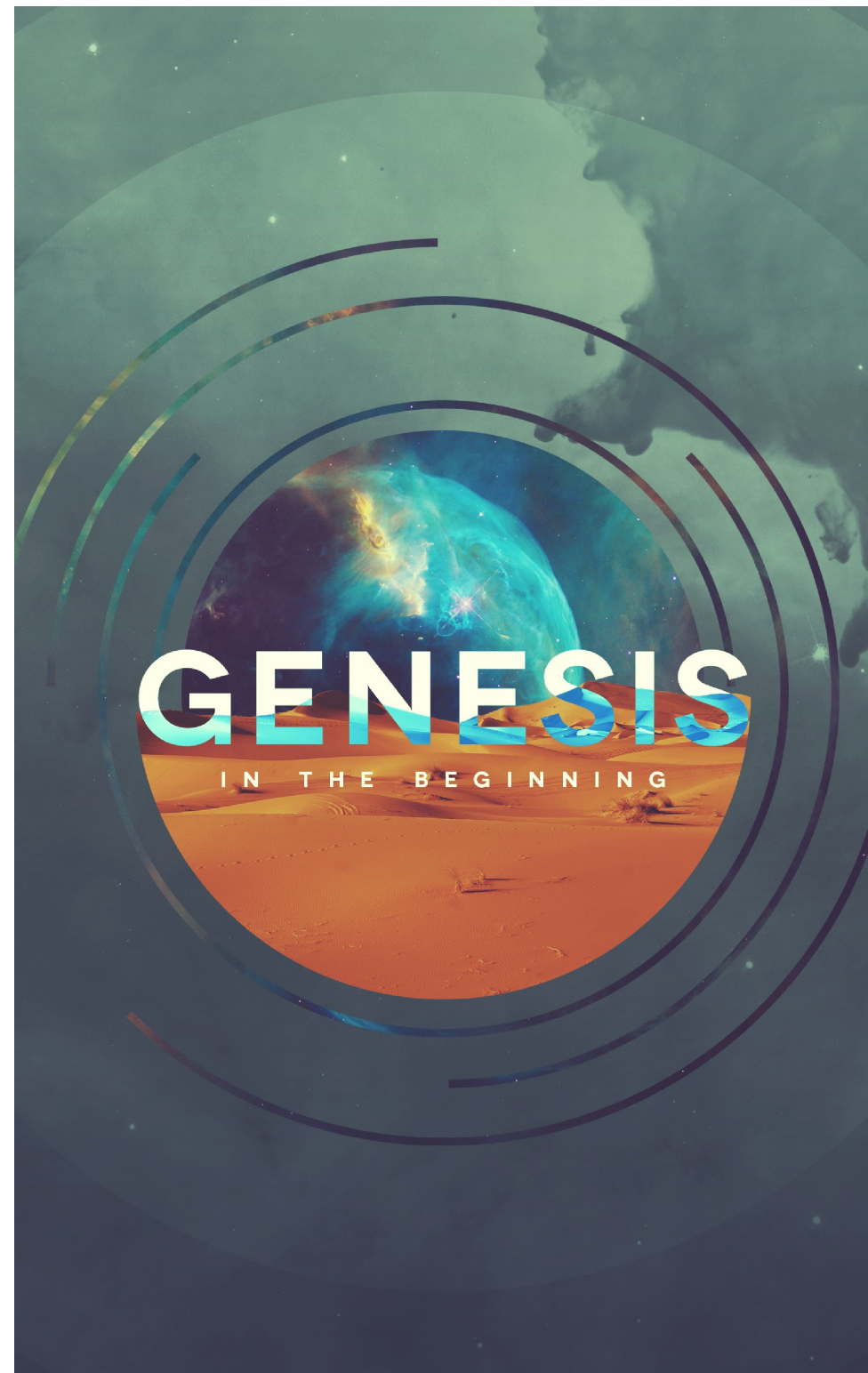
Office Hours

Monday – Friday
9:00 a.m. – 1:00 p.m.
Closed on Holidays

Phone: 858.278.2633

2650 Melbourne Dr.
San Diego, CA 92123

www.missionvillage.church



Welcome to
Mission Village Christian Fellowship

Sunday, September 22, 2019

8:30 a.m. Adult Sunday School

9:30 a.m. Worship

Monday, September 23, 2019

1:00 p.m. Bible Study-Library w/Russ Armstead

7:00 p.m. Women's Study-Library w/Leah Peek

7:00 p.m. Men's Bible Study at the Peek's
5102 Baxter St, 92117—858-829-2097

Tuesday, September 24, 2019

7:00 p.m. Prayer Meeting

Wednesday, September 25, 2019

10:00-2:00 p.m. Serra Mesa Food Pantry

6:45 p.m. Youth Group

Thursday, September 26, 2019

Friday, September 27, 2019

11:00 a.m. Grief Support Group-Library

7:00 p.m. Home Fellowship at the French's
3333 Ruffin Rd. 3E 92123 858.735.5924

Saturday, September 28, 2019

8:30 a.m. Coffee/Refreshment & Work Party

Upcoming Events

Friday, October 4—6, Men's Retreat

Sunday, October 6, Kearny Mesa Nursing Center

Thursday, October 31, Harvest Festival

Sermon Notes

Big Questions, Part 12

My Way or the Highway

Genesis 26:34-28:9

