

✝

### Membership and/or Baptism

Are you interested in becoming a Member? Are you interested in being Baptized? Please speak to our Pastor Steve de Vos or one of our Elders—Russ Armstead, Tony DaVee, Christopher French, Carl Jensen, Arturo Aray or contact the office at 858.278.2633.

#### We Need CANDY Donations

There are barrels in the Narthex



And.. Non-Food Treats



for the  
Harvest Festival

Thursday, October 31

#### Grief Support Group on the second & fourth Friday of every month at

11:00 a.m. in the Library.

If you are interested in attending,  
please talk to Pastor Steve  
or Joanna de Vos

#### Work Party Every Fourth Saturday of the month

8:30 a.m. to 11:00 a.m.  
refreshment will be provided.

**For more info call Mike Loren  
at 619-464-1133**

Do you need prayer?

Send your prayer request to  
[mvcfprayerwarriors@gmail.com](mailto:mvcfprayerwarriors@gmail.com)  
or call the office 858.278.2633



#### Kearny Mesa Nursing Center Visit Sunday, November 3 at 3:00 p.m.

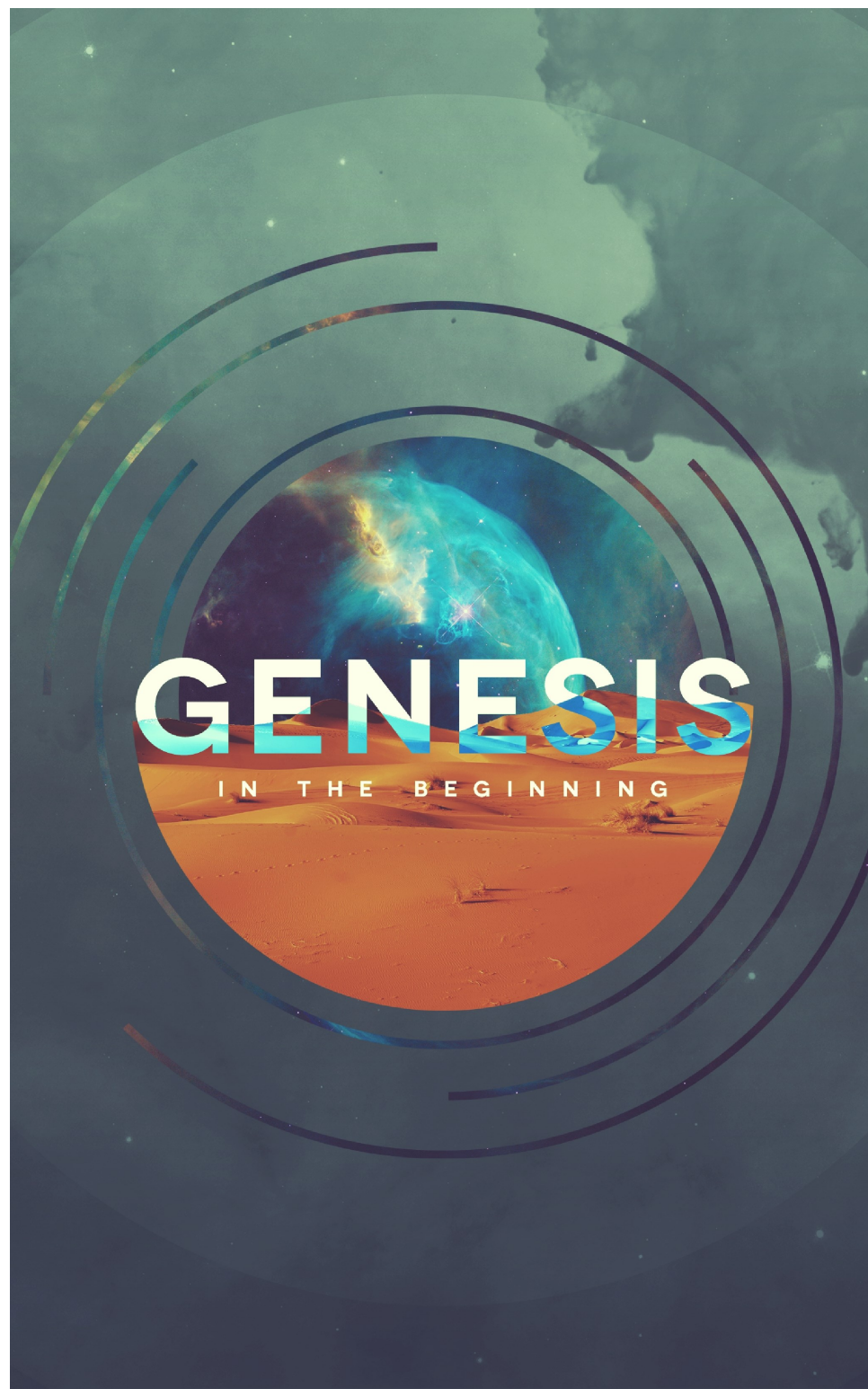
*Come join us for worship, singing and  
prayer with the residents at Kearny Mesa  
Nursing Center. For more information or a  
ride please talk to Tony DaVee.*

#### Office Hours

Monday – Friday  
9:00 a.m. – 1:00 p.m.  
Closed on Holidays

Phone: 858.278.2633

2650 Melbourne Dr.  
San Diego, CA 92123  
[www.missionvillage.church](http://www.missionvillage.church)



Welcome to  
Mission Village Christian Fellowship

**Sunday, October 20, 2019**

8:30 a.m. Adult Sunday School

9:30 a.m. Worship

11:15 a.m. New Members Class

**Monday, October 21, 2019**

1:00 p.m. Bible Study-Library w/Russ Armstead

7:00 p.m. Women's Study-Library w/Leah Peek

7:00 p.m. Men's Bible Study at the Peek's

5102 Baxter St, 92117—858-829-2097

**Tuesday, October 22, 2019**

7:00 p.m. Prayer Meeting

**Wednesday, October 23, 2019**

10:00-2:00 p.m. Serra Mesa Food Pantry

6:45 p.m. Youth Group

**Thursday, October 24, 2019**

**Friday, October 25, 2019**

11:00 a.m. Grief Support Group-Library

7:00 p.m. Home Fellowship at the French's

3333 Ruffin Rd. 3E 92123 858.735.5924

**Saturday, October 26, 2019**

8:30 a.m. Work Party

Youth Rummage Sale—MVCF Lawn

See Terri Carver or Jim Ryer

**Upcoming Events**

Thursday, October 31, Harvest Festival

Sunday, November 3, Kearny Mesa Nursing Center

Sunday, November 10, Special Congregation Meeting

Sermon Notes

Big Questions, Part 14

The Unexpected Journey to Blessing

Genesis 32:22-32

